



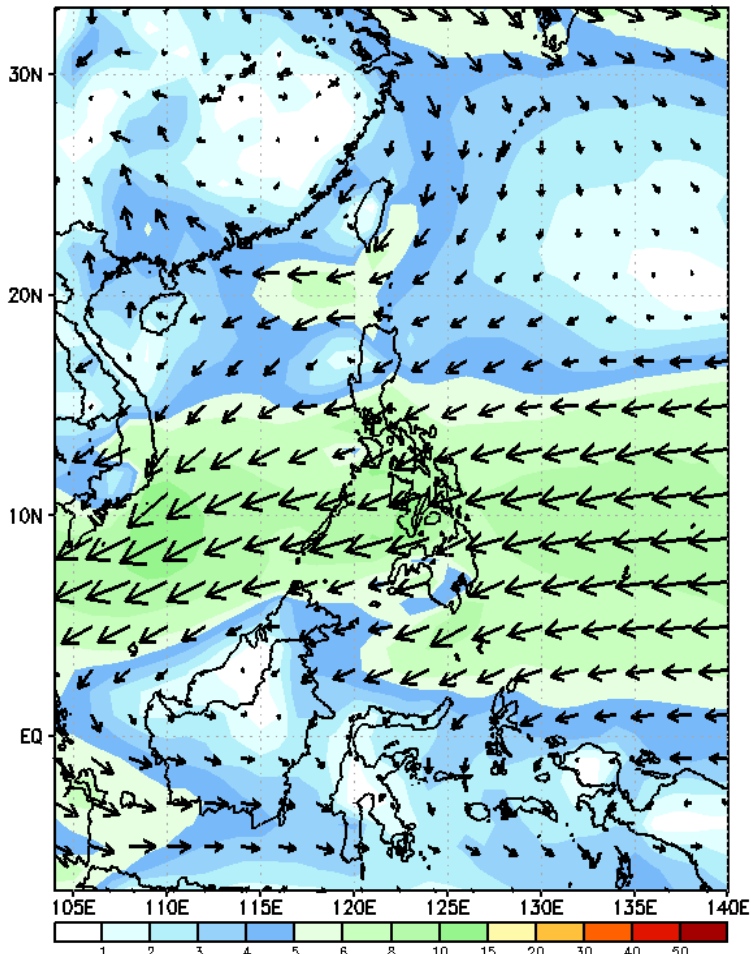
Week 1 & Week 2 Forecast for the Philippines using GEFS Model



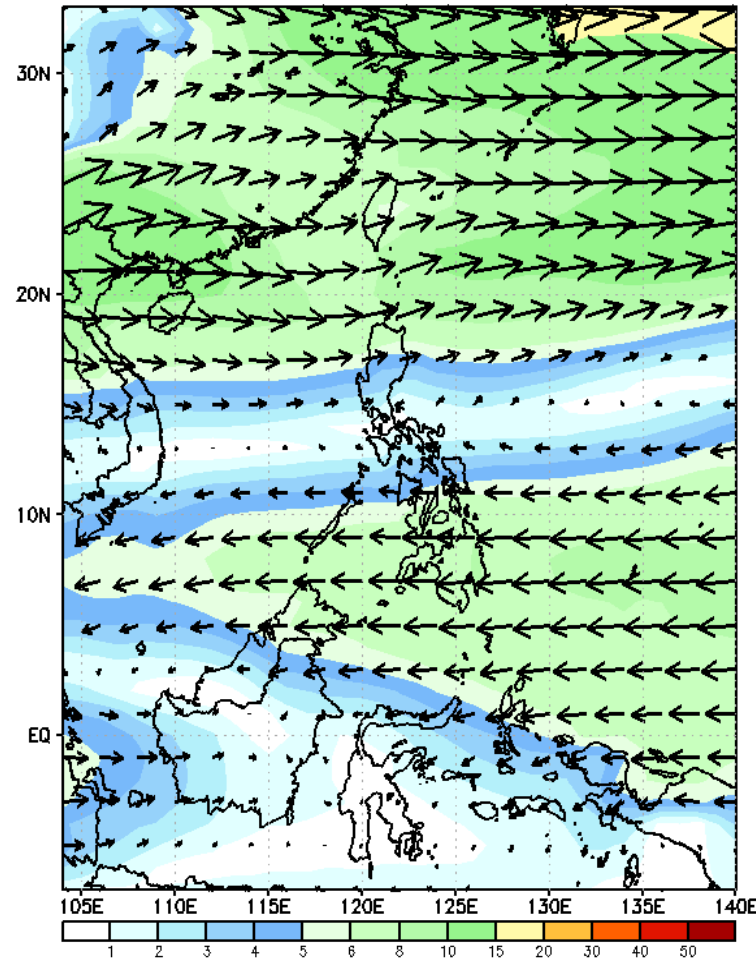
GEFS Week-1 Wind Forecasts:

Week 1: Jan 24-30, 2025

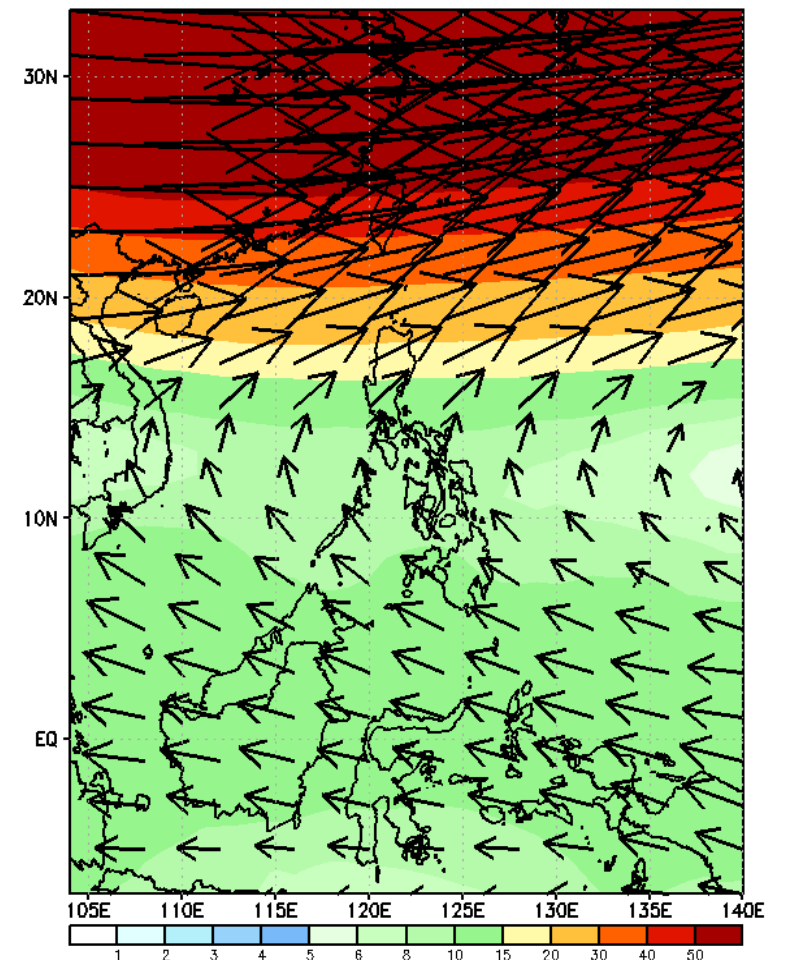
GEFS Week-1 850-hPa Wind Total
Valid: 20250124 - 20250130



GEFS Week-1 700-hPa Wind Total
Valid: 20250124 - 20250130

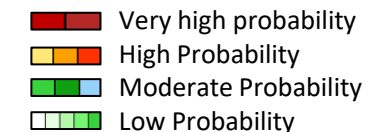


GEFS Week-1 200-hPa Wind Total
Valid: 20250124 - 20250130



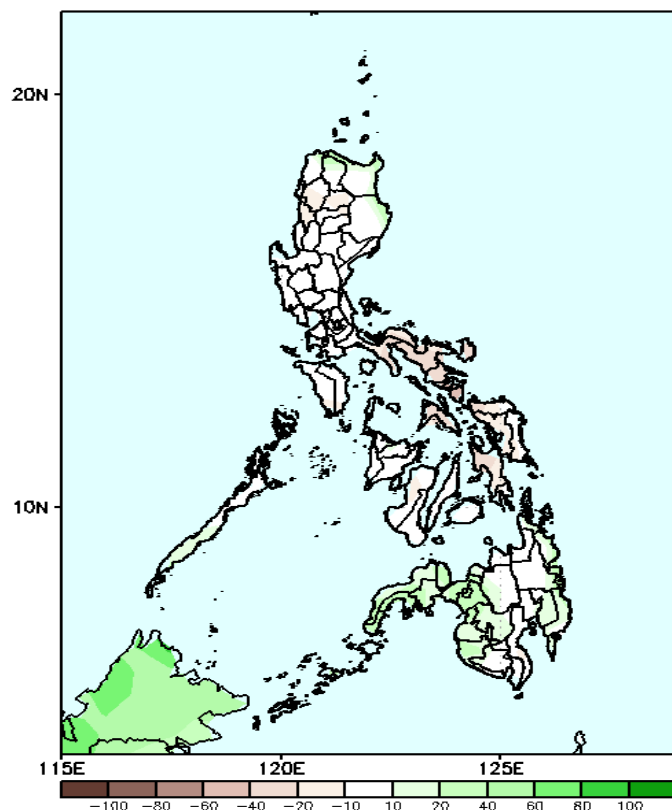
Northeast Monsoon affecting Extreme Northern and Central Luzon while Easterlies affecting the rest of the country during the forecast period

Precipitation Anomaly and Exceedance Probability > 25/50 mm



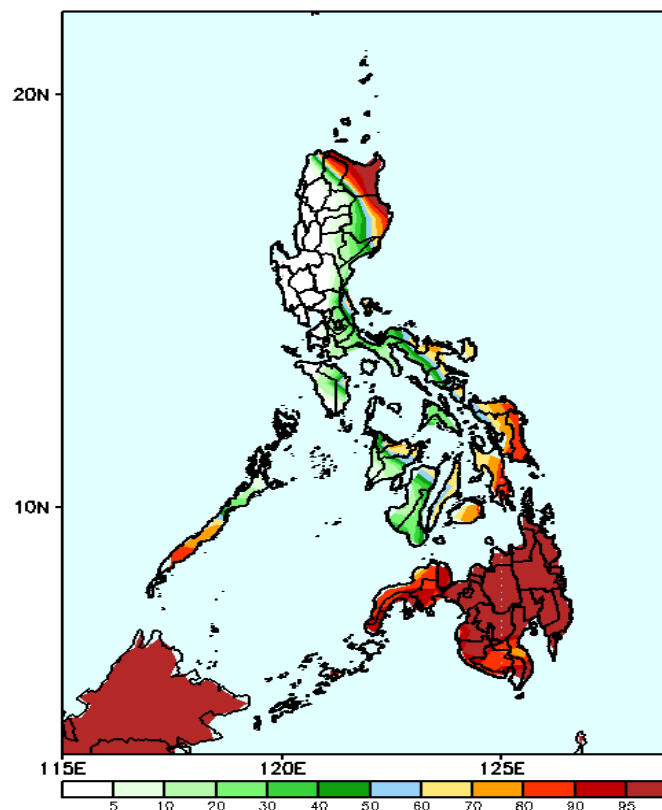
Week 1: Jan 24-30, 2025

GEFS Week-1 Precip Anomaly
Valid: 20250124 - 20250130



Rainfall reduction of 10-60mm is expected in most parts of Bicol Region and Eastern Visayas while 10-60mm increase of rainfall in eastern and western Mindanao.

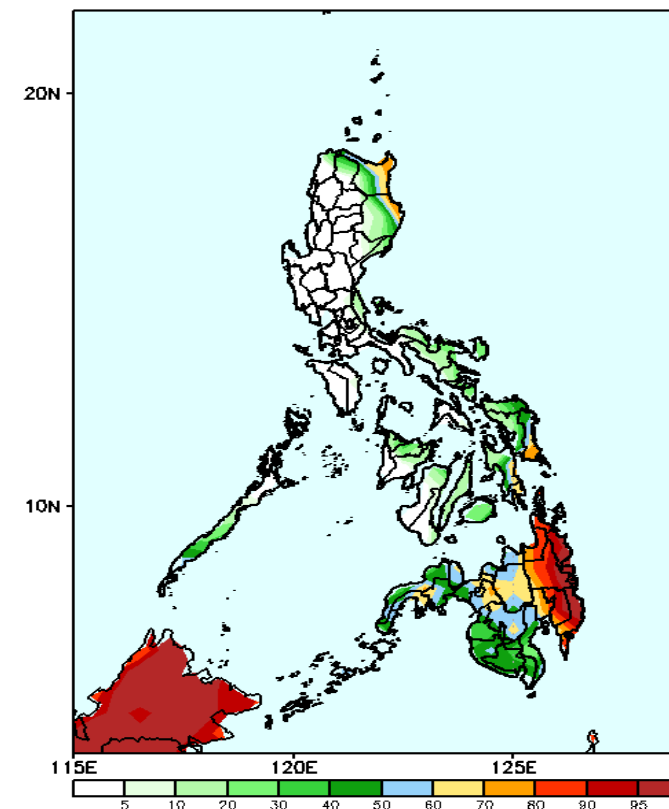
GEFS Week-1 Exceedance Prob. > 25mm
Valid: 20250124 - 20250130



Probability to Exceed 25mm

- High to very high over Cagayan, the eastern parts of Apayao and Isabela, Eastern Samar, Southern Leyte, and most of Mindanao;
- Moderate to high over the rest Apayao and Isabela, Bicol Region, southern Palawan Capiz, Central Visayas and the rest of Eastern Visayas;
- Low to Moderate over the rest of Eastern Luzon and Visayas.
- Low over the rest of Luzon.

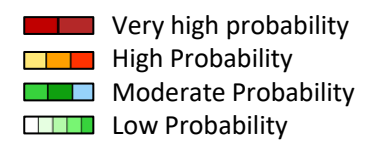
GEFS Week-1 Exceedance Prob. > 50mm
Valid: 20250124 - 20250130



Probability to Exceed 50mm

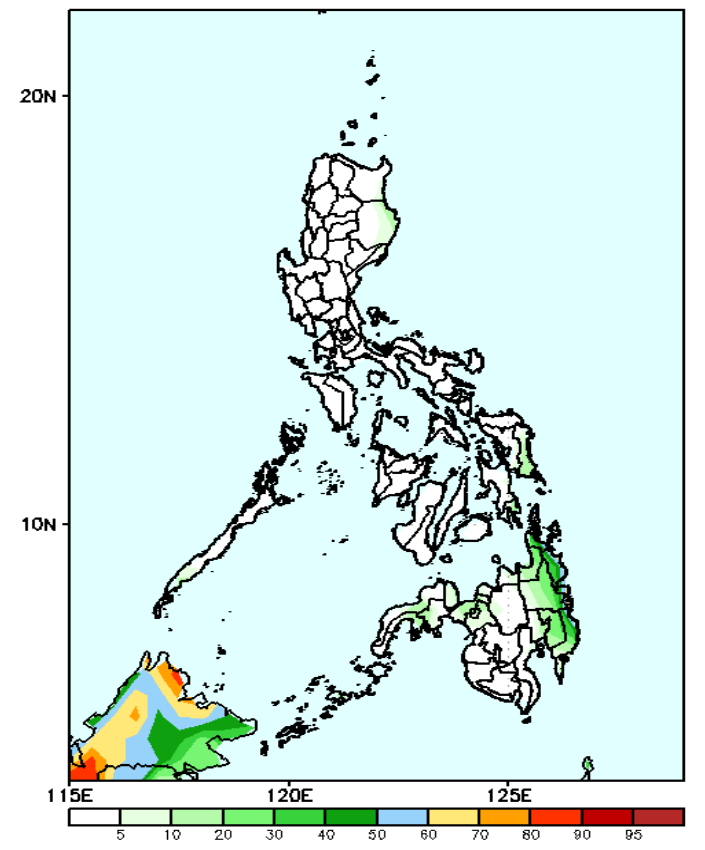
- High to very high over Eastern Mindanao;
- Moderate to high over Batanes, eastern part of Cagayan, easternmost part of Isabela, southern part of Palawan, Eastern Samar, Southern Leyte and the rest of Mindanao;
- Low over the rest of the country.

Exceedance Probability > 100/150/200 mm



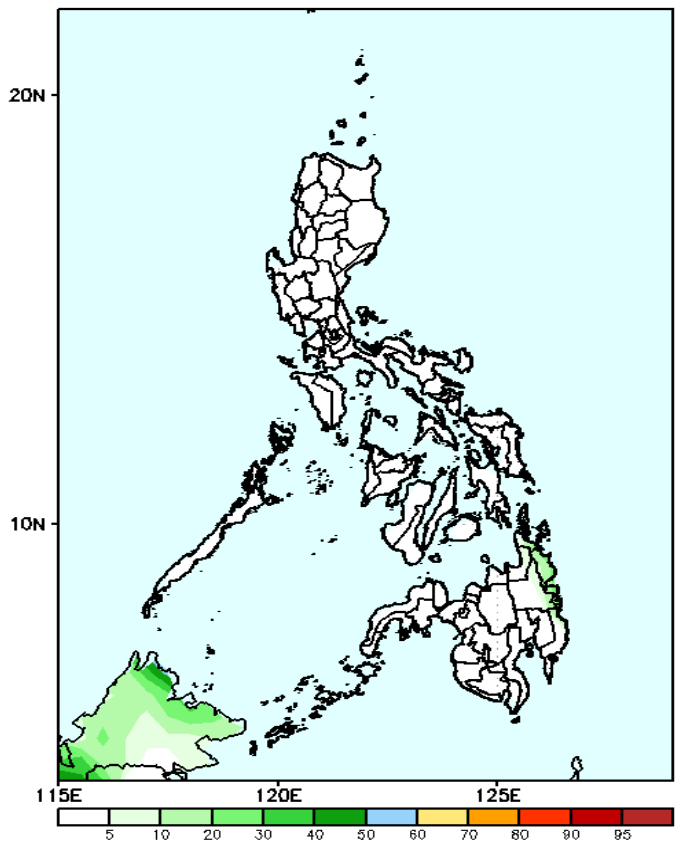
Week 1: Jan 24-30, 2025

GEFS Week-1 Exceedance Prob. > 100mm
Valid: 20250124 - 20250130



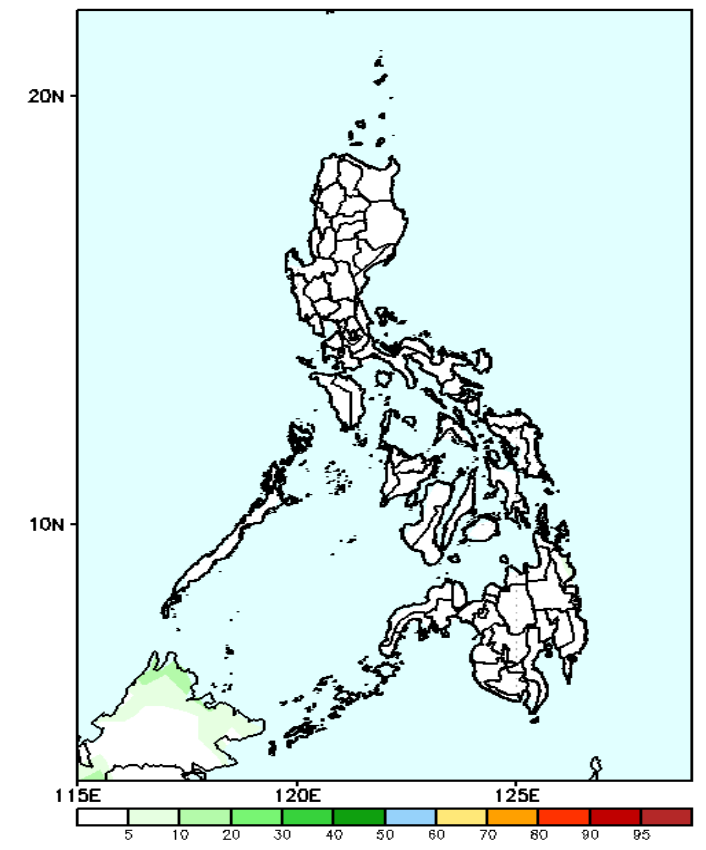
- Probability to Exceed 100mm**
- Moderate over Surigao Provinces and Davao Oriental;
 - Low over the rest of the country.

GEFS Week-1 Exceedance Prob. > 150mm
Valid: 20250124 - 20250130



- Probability to Exceed 150mm**
- Low across the country.

GEFS Week-1 Exceedance Prob. > 200mm
Valid: 20250124 - 20250130

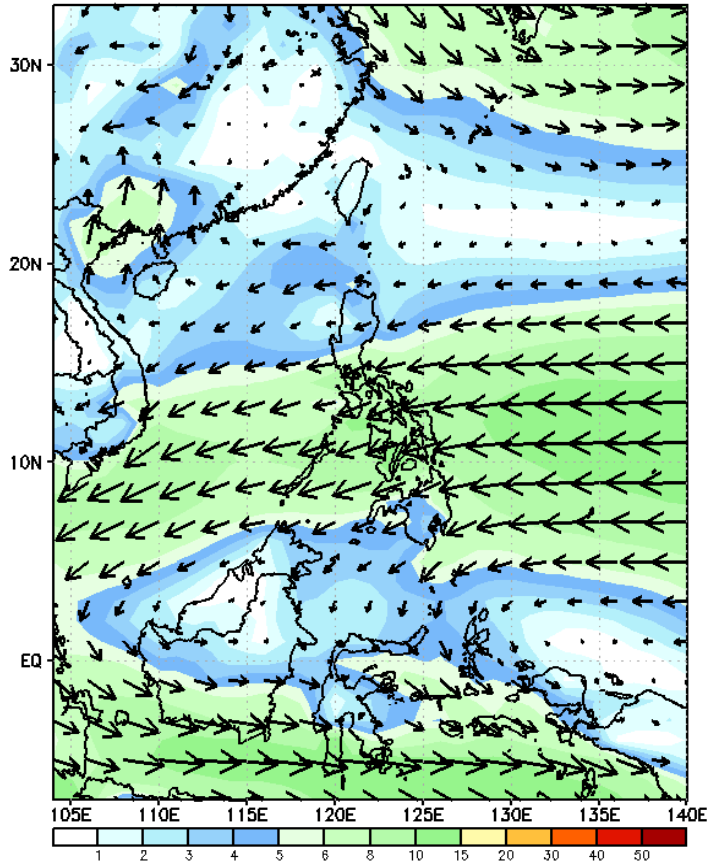


- Probability to Exceed 200mm**
- Low across the country.

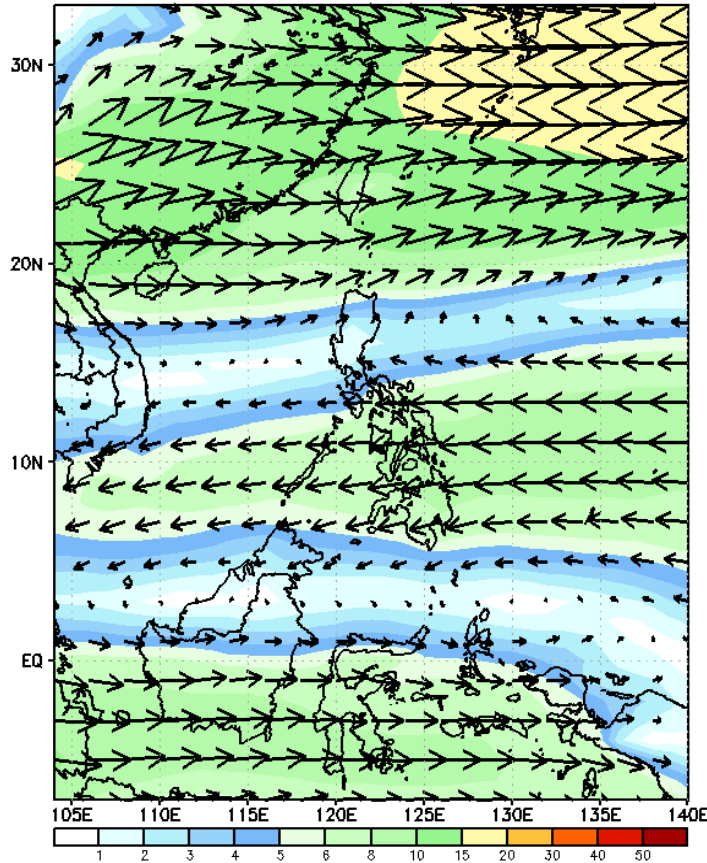
GEFS Week-2 Wind Forecasts:

Week 2: Jan 31- Feb 06, 2025

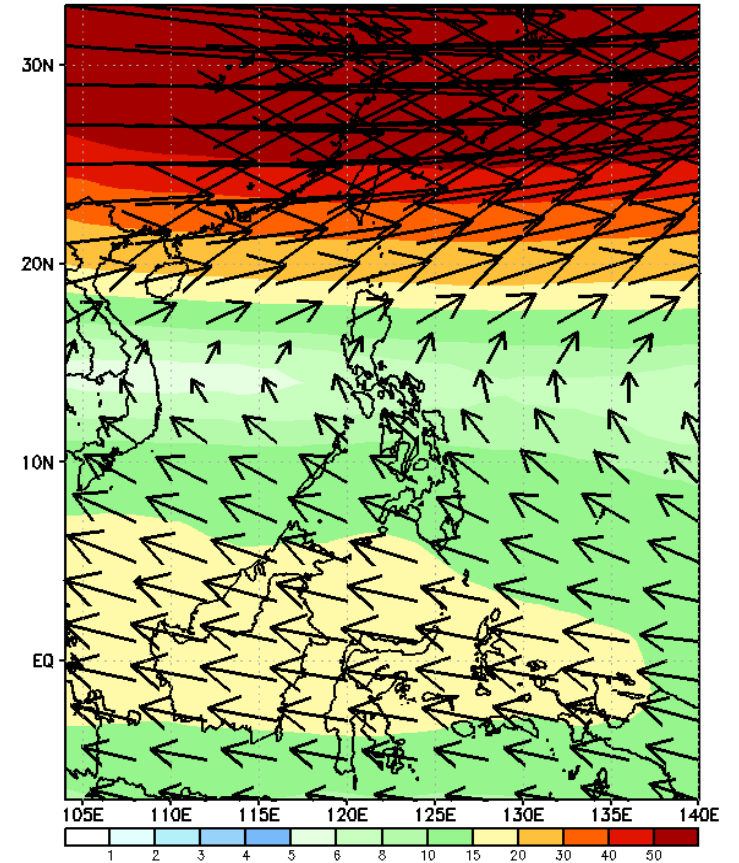
GEFS Week-2 850-hPa Wind Total
Valid: 20250131 - 20250206



GEFS Week-2 700-hPa Wind Total
Valid: 20250131 - 20250206

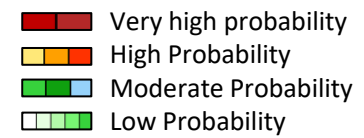


GEFS Week-2 200-hPa Wind Total
Valid: 20250131 - 20250206



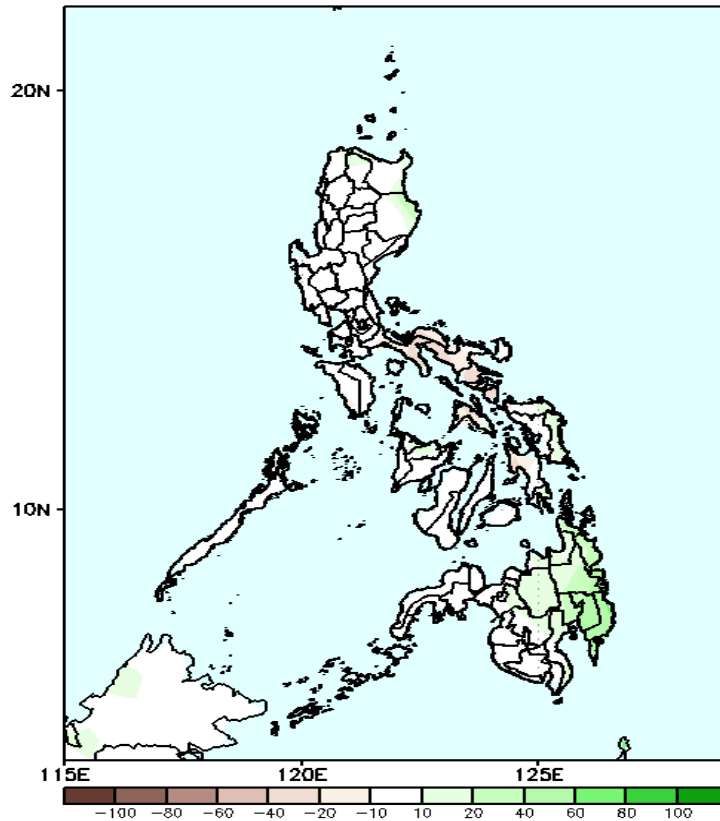
Northeast Monsoon will likely affect Extreme Northern Luzon while Easterlies will likely affect the rest of the country during the forecast period

Precipitation Anomaly and Exceedance Probability > 25/50 mm



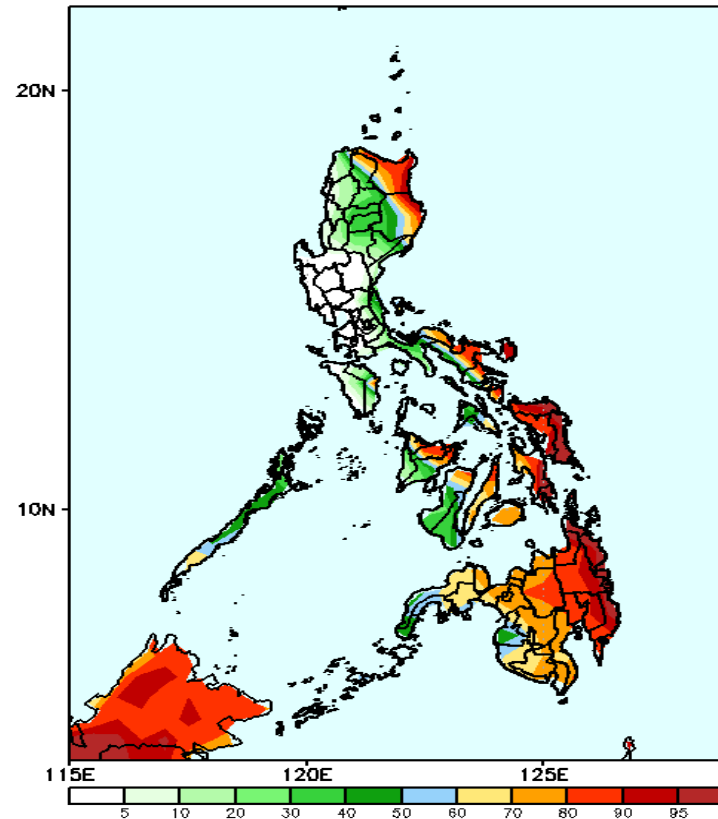
Week 2: Jan 31- Feb 06, 2025

GEFS Week-2 Precip Anomaly
Valid: 20250131 - 20250206



Rainfall reduction of 10-40mm is expected in most parts of Bicol Region while 20-70mm increase of rainfall in eastern and central parts of Mindanao.

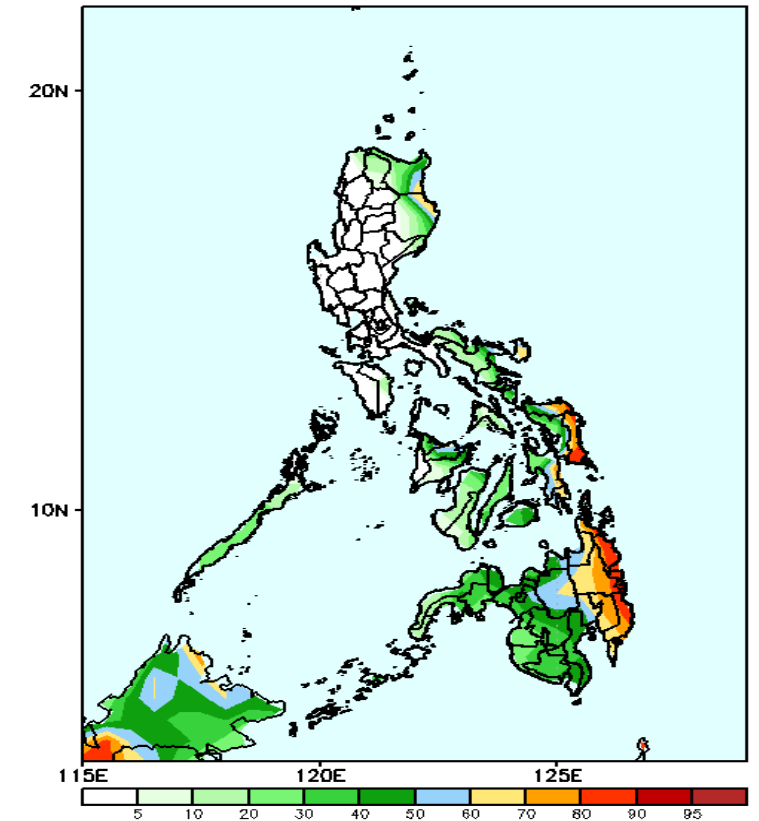
GEFS Week-2 Exceedance Prob. > 25mm
Valid: 20250131 - 20250206



Probability to Exceed 25mm

- High to very high over Batanes, Cagayan, eastern part of Isabela, Bicol Region, most parts of Eastern and Central Visayas, Capiz, and Eastern Mindanao;
- Moderate to high over Apayao, the rest of Isabela, the rest of Eastern and Southern Luzon, and the rest of Visayas and Mindanao;
- Low to moderate over the rest of Luzon.

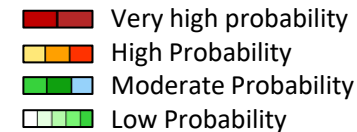
GEFS Week-2 Exceedance Prob. > 50mm
Valid: 20250131 - 20250206



Probability to Exceed 50mm

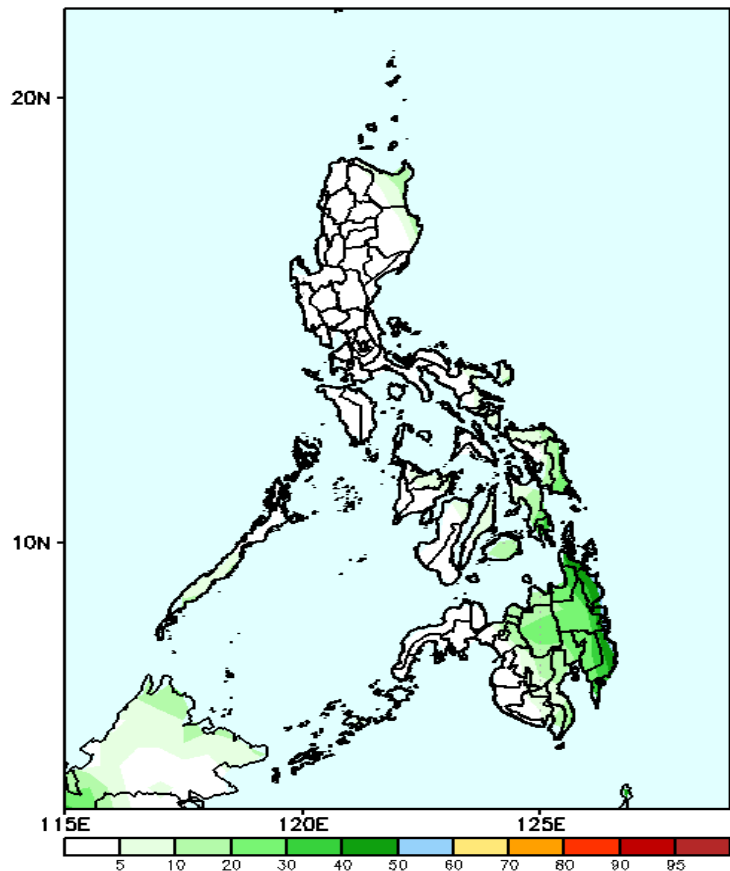
- Moderate to high over Batanes, the easternmost part of Cagayan and Isabela, eastern portion of Bicol Region, most of Eastern Visayas, Bukidnon and Eastern Mindanao;
- Low to moderate over the rest of Bicol Region, Visayas and Mindanao;
- Low over the rest of Luzon.

Exceedance Probability > 100/150/200 mm



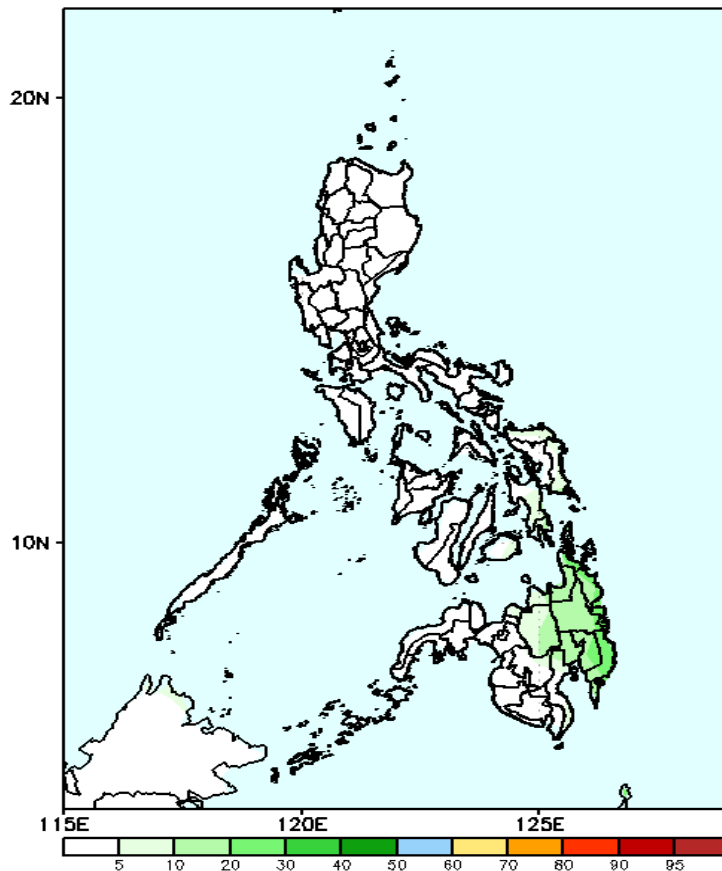
Week 2: Jan 31- Feb 06, 2025

GEFS Week-2 Exceedance Prob. > 100mm
Valid: 20250131 - 20250206



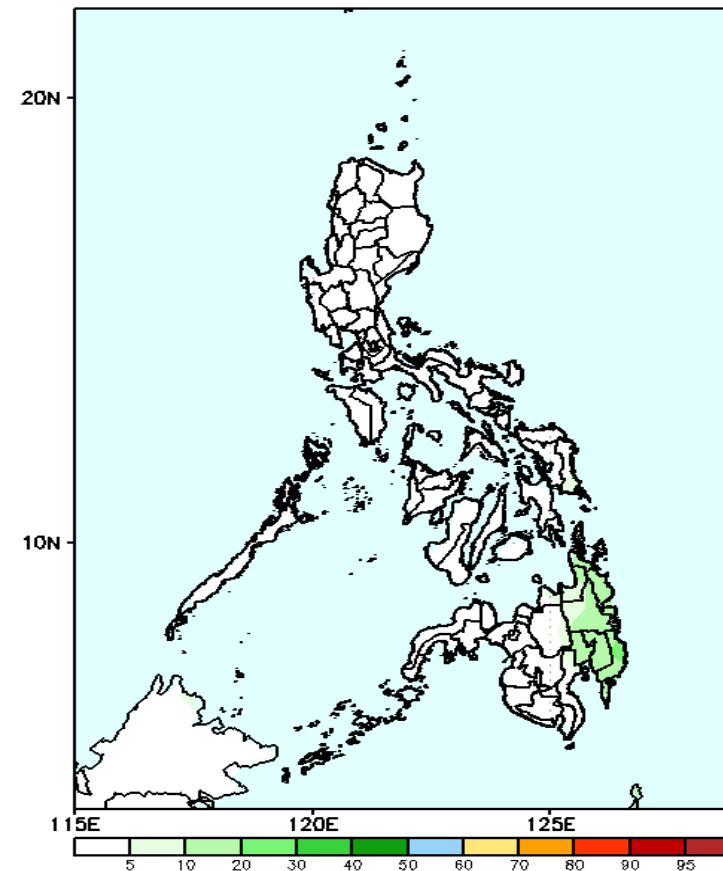
- Probability to Exceed 100mm**
- Low to moderate over Eastern Mindanao;
 - Low over the rest of the country.

GEFS Week-2 Exceedance Prob. > 150mm
Valid: 20250131 - 20250206



- Probability to Exceed 150mm**
- Low across the country.

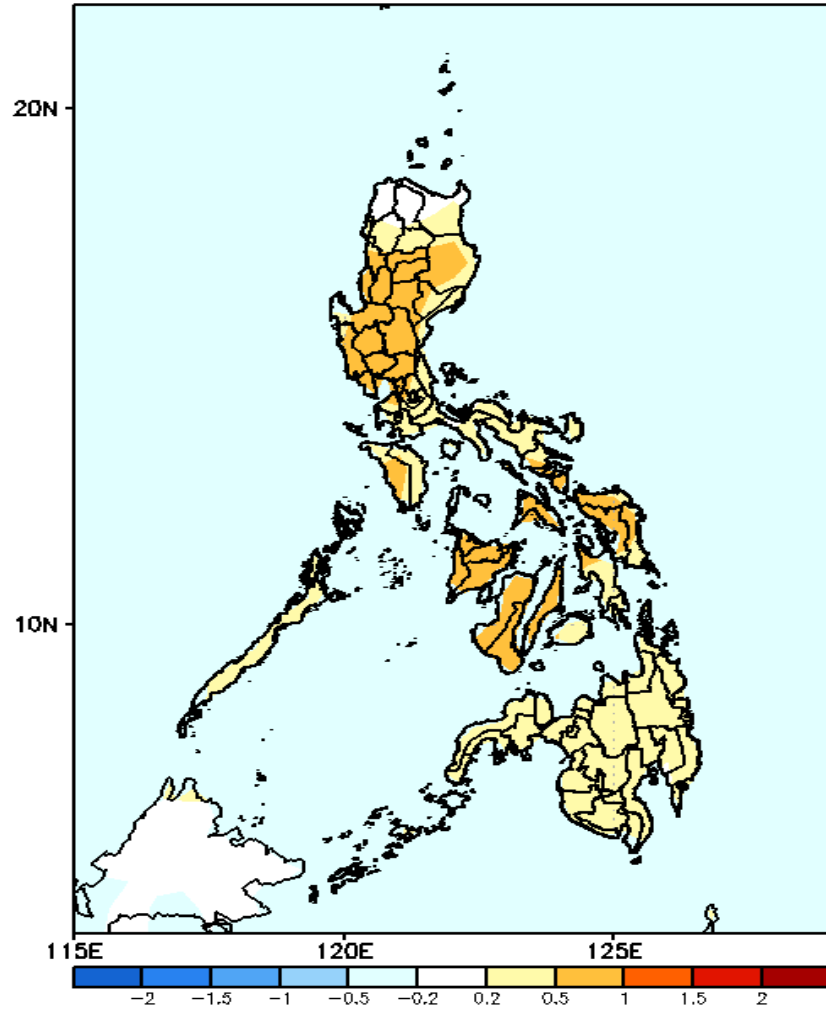
GEFS Week-2 Exceedance Prob. > 200mm
Valid: 20250131 - 20250206



- Probability to Exceed 200mm**
- Low across the country.

GEFS Week-1 & 2 Forecasts: T2m Anomaly

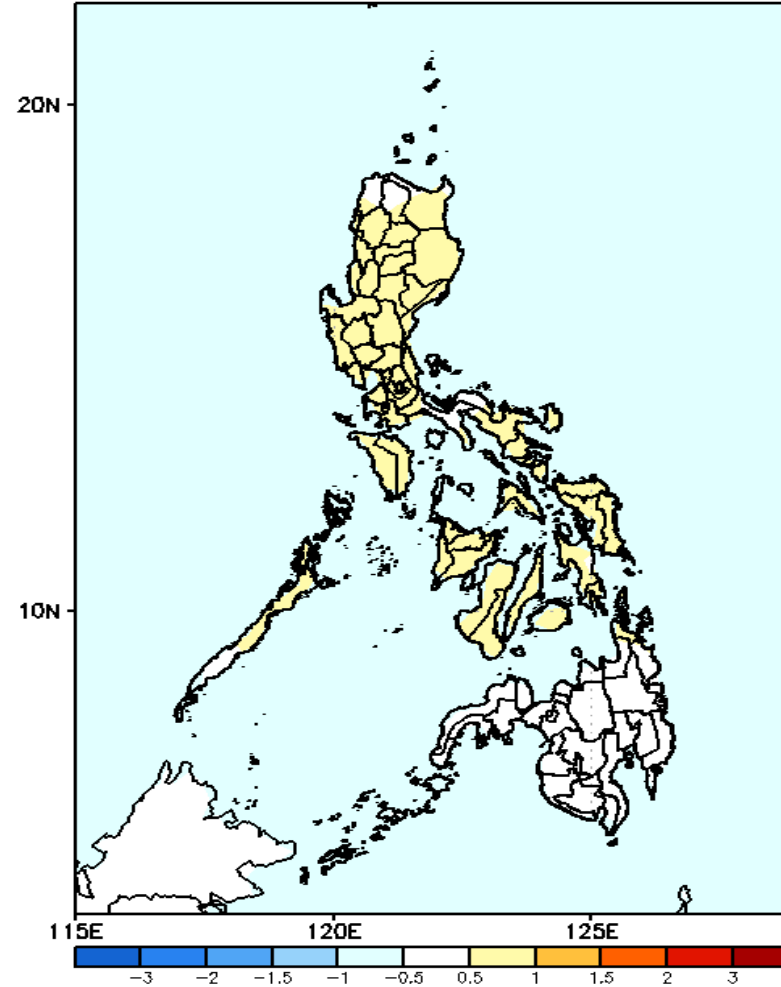
GEFS Week-1 T2m Anomaly
Valid: 20250124 - 20250130



2m Temperature Week 1: Jan 24-30, 2025

Warmer than average surface air temperature will likely be experienced in most parts of Luzon and Visayas while slightly warmer temperature is expected in Mindanao.

GEFS Week-2 T2m Anomaly
Valid: 20250131 - 20250206



2m Temperature Week 2: Jan 31- Feb 06, 2025

Slightly warmer than average surface air temperature will likely be experienced in most parts of Luzon and Visayas while near average temperature is expected in Mindanao.